

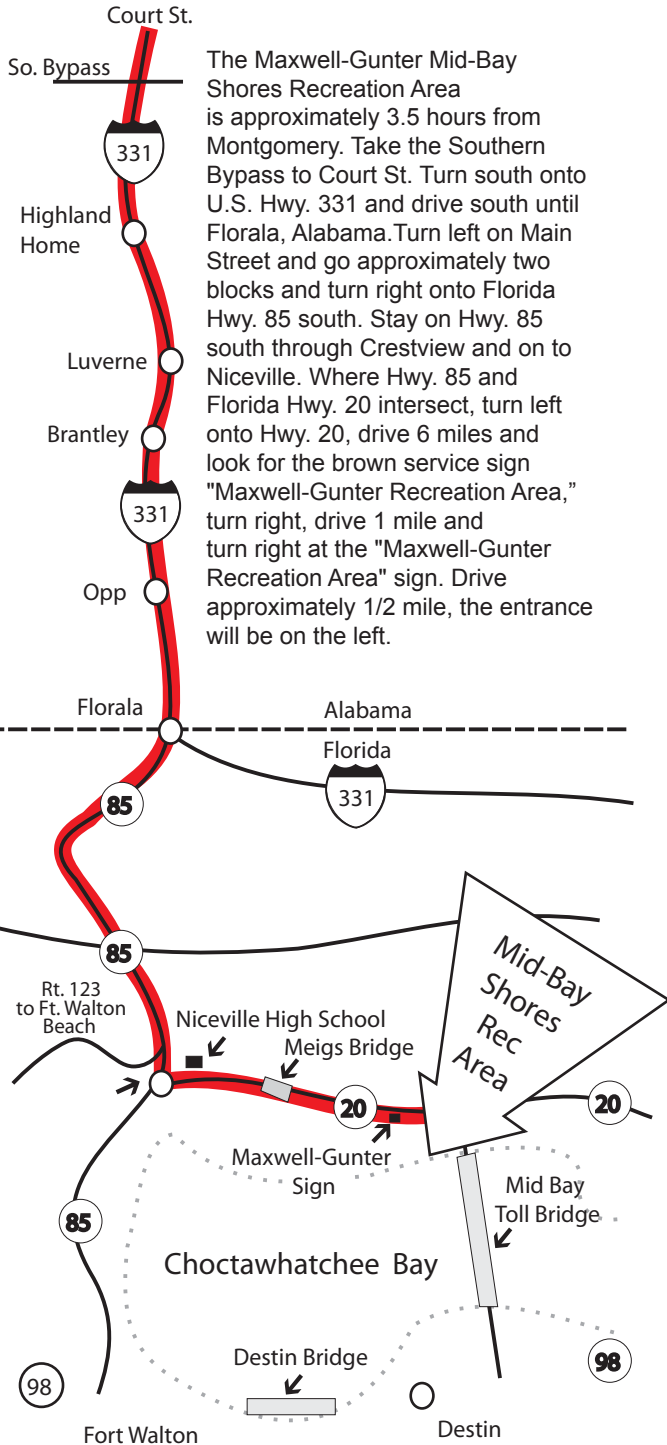
## Mid-Bay Shores Recreation Area

Mid-Bay Shores is located next to the white, sandy shores of the Choctawhatchee Bay and offers easy access to Destin's shopping, dining and family entertainment. The recreation area includes 26 RV sites with hook-ups, water, electricity, sewage dump station, 25 rental cabins, 5 mobile homes, boat storage, boat launch, fishing pier, laundry, playground, showers, beach, fitness center, swimming area and WiFi.



### Operation Policies

- There is a \$15 cancellation fee for all reservations cancelled within 7 days from the scheduled check-in date.
- Any patron paying the monthly rate who leaves earlier in the month will have their rate converted from monthly to either weekly or daily and will be issued a refund based on the difference.
- All refunds will be issued in the same manner as purchased. i.e Reservations made at the Maxwell AFB office will call the reservation line for a refund.
- Cabins are operated in accordance with AFI 34-262.
- Maximum 2 cabins per reservation.
- 7 Person maximum occupancy.
- Must call Mid-Bay Shores for late check-in.



The Maxwell-Gunter Mid-Bay Shores Recreation Area is approximately 3.5 hours from Montgomery. Take the Southern Bypass to Court St. Turn south onto U.S. Hwy. 331 and drive south until Florala, Alabama. Turn left on Main Street and go approximately two blocks and turn right onto Florida Hwy. 85 south. Stay on Hwy. 85 south through Crestview and on to Niceville. Where Hwy. 85 and Florida Hwy. 20 intersect, turn left onto Hwy. 20, drive 6 miles and look for the brown service sign "Maxwell-Gunter Recreation Area," turn right, drive 1 mile and turn right at the "Maxwell-Gunter Recreation Area" sign. Drive approximately 1/2 mile, the entrance will be on the left.

**General Information**

- Quiet times 10 p.m. - 8 a.m.
- WiFi available at office and fitness center.
- **NO PETS allowed in cabins.** Two pet-friendly trailers available.
- NO unlicensed vehicles allowed, i.e. ATV, golf carts, and scooters, etc.
- Paddle boats, canoes and bicycle rentals available.

**Cabin/Mobile Homes**

**Cabins 2-bedroom/1 bath. Sleeps 7**

- Guests **must provide** linens, food and toiletries.
- Wheelchair accessible cabin is available.
- Cabins are **furnished** with pillows, blankets, bedspreads, TV, DVD player (rentals available at office), kitchen appliances, pots & pans, coffee maker, iron and outdoor grill.

**Mobile Homes 3-bedroom/1 bath. Sleeps 6**

- Furnished similar to cabins.

**Cabin/Mobile Home - Summer Rates**

(April 1 - September 30)

| Rank        | Per Night |
|-------------|-----------|
| E-6 & below | \$55      |
| E-7 to O-3  | \$75      |
| All others  | \$90      |
| DV          | \$95      |

(2 night minimum stay & 9 day maximum stay)

**Cabin/Mobile Home - Winter Rates**

(October 1 - March 31)

| Rank        | Per Night |
|-------------|-----------|
| E-6 & below | \$40      |
| E-7 to O-3  | \$55      |
| All others  | \$60      |
| DV          | \$70      |

|           |       |
|-----------|-------|
| Weekly    | \$275 |
| Monthly   | \$795 |
| DV Weekly | \$285 |

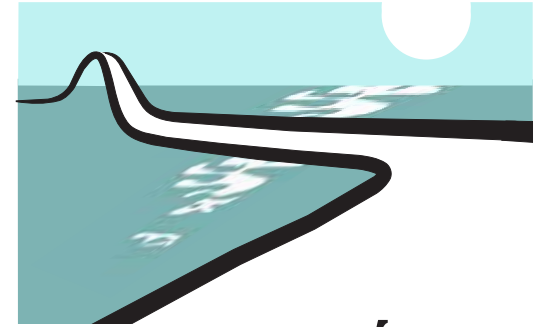
**RV Area Rates**

|         | Full  | Popup & Over Flow |
|---------|-------|-------------------|
| Daily   | \$20  | \$17              |
| Weekly  | \$125 | \$100             |
| Monthly | \$400 | N/A               |

No tents on RV sites  
2 week **MAX** stay in popup & over flow

Make reservations in person through Outdoor Recreation, bldg. 851, Monday - Friday, 9 a.m. - 5 p.m., or call 953-3509, option 1.

Prices are subject to change without notice.



**Mid-Bay Shores**

**Maxwell-Gunter Recreation Area  
Niceville, Florida**

Open 7 days a week  
Office Hours: 8 a.m. - 5 p.m.  
Check-In 3 - 5 p.m.  
Check-Out by 11 a.m.

Mid-Bay Shores  
801 White Point Rd.  
Niceville, Florida 32578  
(850) 897-2411  
Fax (850) 897-2511

**RESERVATIONS**  
(334) 953-3509, Option 1

*Active duty personnel may make reservations 6 months in advance; all others 4 months.*

[www.42fss.us](http://www.42fss.us)